

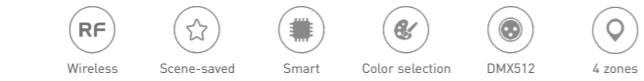
EX8S Touch Panel (RGBW)



Manual
www.ltech-led.com

Product Features

- Adopt 2.4GHz RF wireless transmission technology, which is applicable for license and patent free worldwide.
- Advanced RF wireless sync/zone control technology, be able to realize dimming, synchronous dynamic changing color effect between receivers.
- Within the effective range, any quantity of receivers can be connected in the same zone, dynamic and static effects keep synchronization between different groups.
- Four zones can be combined arbitrarily, for example: Zone 1 and Zone 2 as a group, or zone 1, zone 3, zone 4 as a group, or all the 4 zones as a group.
- Support DMX512 signal output, can work as DMX master controller to control DMX fixture.
- Install touch panel at different areas, can control the same LED light, achieve multi-panel control, no quantity limited.
- Touch keys with chord and LED indicator.
- Saved the scene you like, touch 1 key to recall the scene, easy and convenient
- Adopts the capacitive touch control technology on the full color wheel, make the LED color selection more user-friendly.

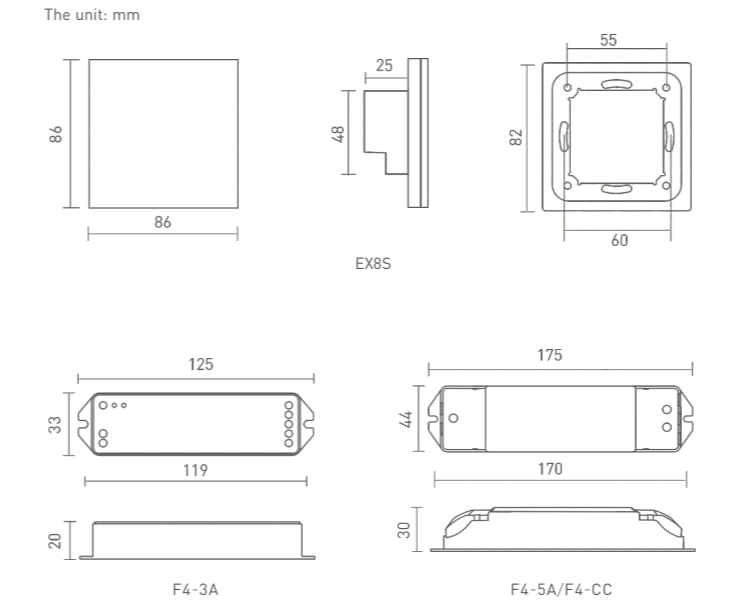


Technical Specs

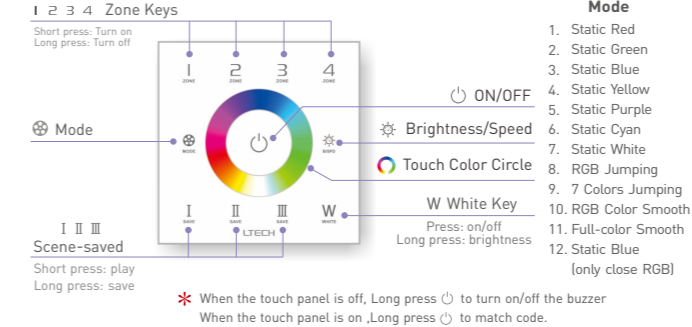
EX8S RGBW Touch Panel (4 zones)			
Input Voltage:	100~240Vac	Dimensions:	L86×W86×H36(mm)
Output Signal:	RF 2.4GHz, DMX512	Package Size:	L113×W112×H50(mm)
Working Temp.:	-30°C~55°C	Weight(G.W.):	225g
F4-3A CV Receiver			
Input Voltage:	5~24Vdc	Working Temp.:	-30°C~55°C
Current Load:	3A × 4CH Max. 12A	Dimensions:	L125×W33×H20(mm)
Max Output Power:	[0~15W...72W]×4CH Max. 288W	Package Size:	L127×W35×H24(mm)
Wireless Signal:	2.4GHz	Weight(G.W.):	60g
F4-5A CV Receiver			
Input Voltage:	5~24Vdc	Working Temp.:	-30°C~55°C
Current Load:	5A × 4CH Max. 20A	Dimensions:	L175×W44×H30(mm)
Max Output Power:	[0~25W...120W]×4CH Max. 480W	Package Size:	L178×W48×H33(mm)
Wireless Signal:	2.4GHz	Weight(G.W.):	150g
F4-CC CC Receiver			
Input Voltage:	12~48Vdc	Working Temp.:	-30°C~55°C
Output Voltage:	3~46Vdc	Dimensions:	L175×W44×H30(mm)
Output Current:	CC 350/700/1050mA×4CH	Package Size:	L178×W48×H33(mm)
Output Power:	[1.05W~48.3W]×4CH Max 193.2W	Weight(G.W.):	165g
Wireless Signal:	2.4GHz		



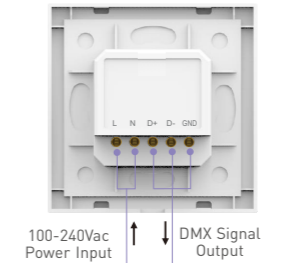
Product Size



Key Functions



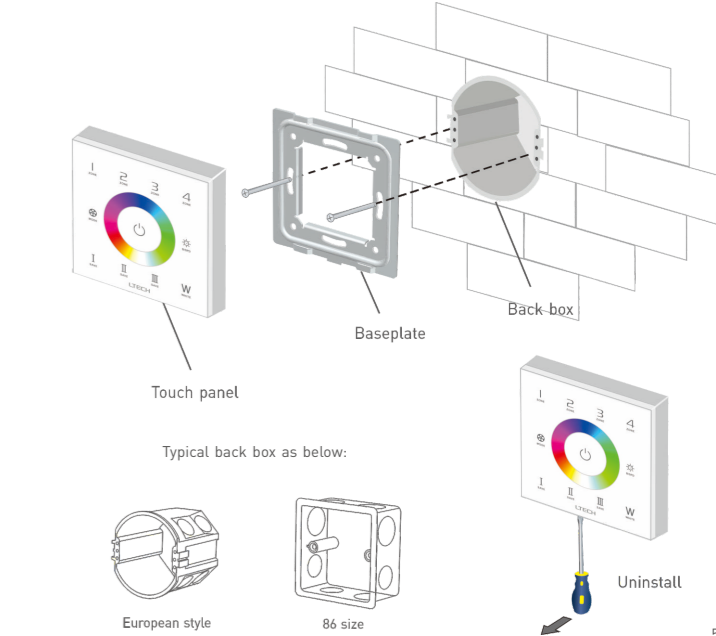
Terminals:



Mode

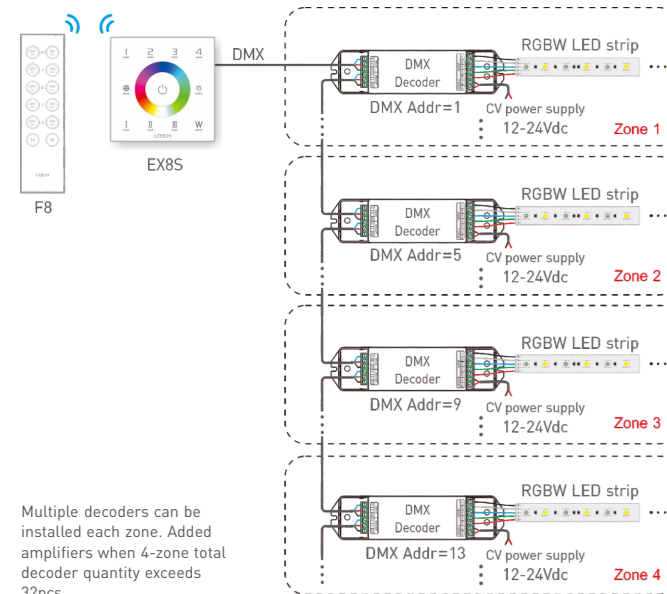
1. Static Red
2. Static Green
3. Static Blue
4. Static Yellow
5. Static Purple
6. Static Cyan
7. Static White
8. RGB Jumping
9. 7 Colors Jumping
10. RGB Color Smooth
11. Full-color Smooth
12. Static Blue (only close RGB)

Installation Instruction



DMX Wiring

LTECH

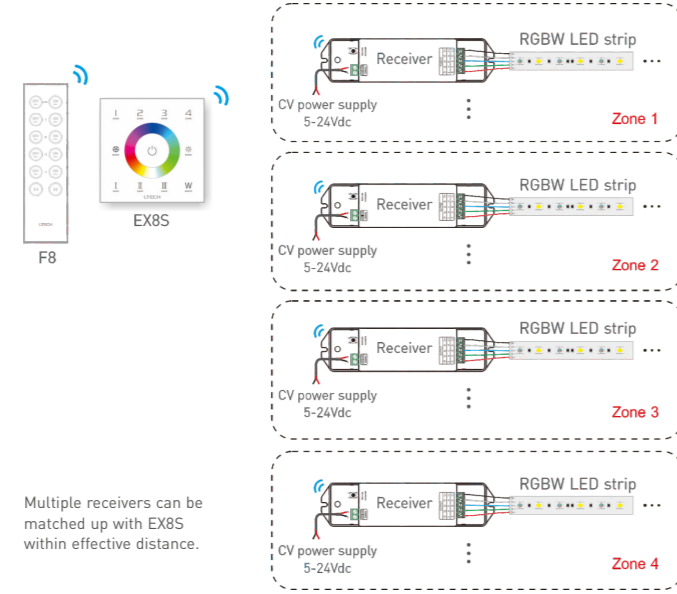


Multiple decoders can be installed each zone. Added amplifiers when 4-zone total decoder quantity exceeds 32pcs.

6

RF Wireless Wiring

LTECH

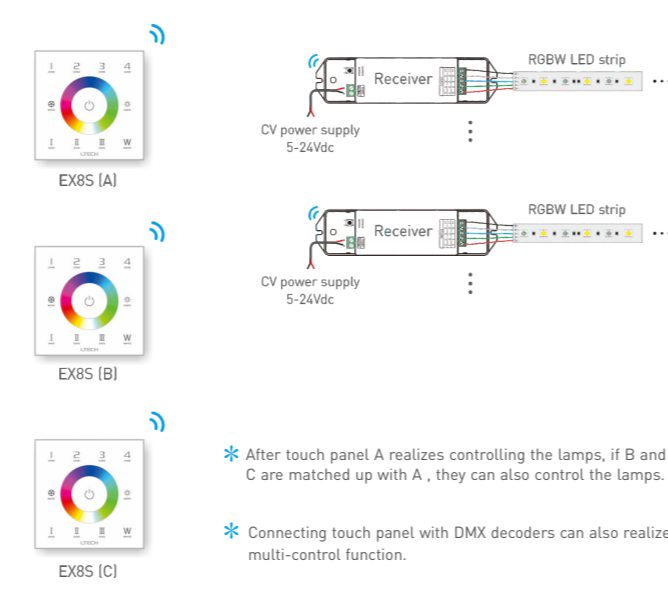


Multiple receivers can be matched up with EX8S within effective distance.

7

Multi-panel Control Wiring

LTECH



- * After touch panel A realizes controlling the lamps, if B and C are matched up with A, they can also control the lamps.
- * Connecting touch panel with DMX decoders can also realize multi-control function.

8

Match code between Touch Panel & Receiver

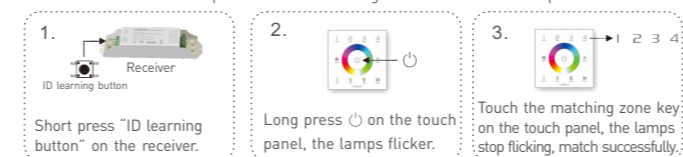
LTECH

Match code:

Method 1: When the touch panel is on and the wiring between receiver and lamps are correct.



Method 2: When the touch panel is on and the wiring between receiver and lamps are correct.



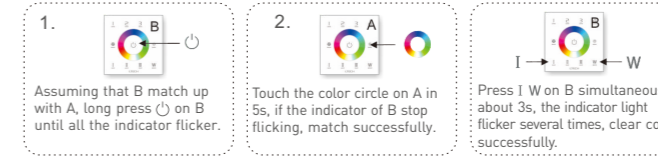
Clear code:



Match Code between Touch Panels

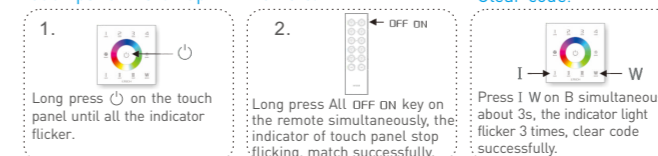
LTECH

Match code:

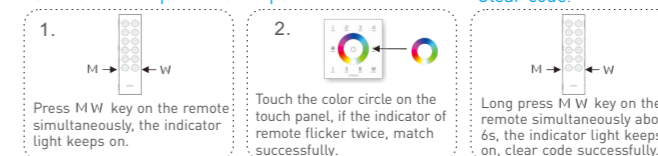


Match Code between Touch Panel & Remote

Touch panel match up with remote:



Remote match up with touch panel:



10

Warranty Agreement:

LTECH

- We provide lifelong technical assistance with this product:
 - A 5-year warranty is given from the date of purchase. The warranty is for free repair or replacement if cover manufacturing faults only.
 - For faults beyond the 5-year warranty we reserve the right to charge for time and parts.
- Warranty exclusions below:
 - Any man-made damages caused from improper operation, or connecting to excess voltage and overloading.
 - The product appears to have excessive physical damage.
 - Damage due to natural disasters and force majeure.
 - Warranty label, fragile label and unique barcode label have been damaged.
 - The product has been replaced by a brand new product.
- Repair or replacement as provided under this warranty is the exclusive remedy to the customer. LTECH shall not be liable for any incidental or consequential damages for breach of any stipulation in this warranty.
- Any amendment or adjustment to this warranty must be approved in writing by LTECH only.
 - *This manual only applies to this model. LTECH reserves the right to make changes without prior notice.